

MONTHLY MEMBERSHIP PROGRESS REPORT

LOCATION NEPAL

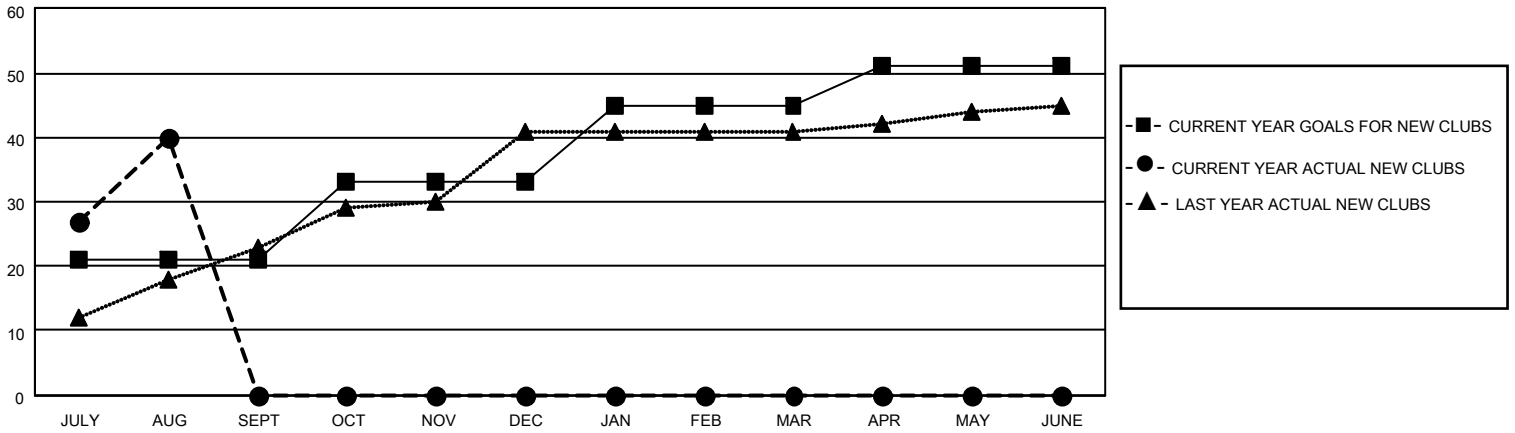
District 325A1

Results as of: 8/31/2021

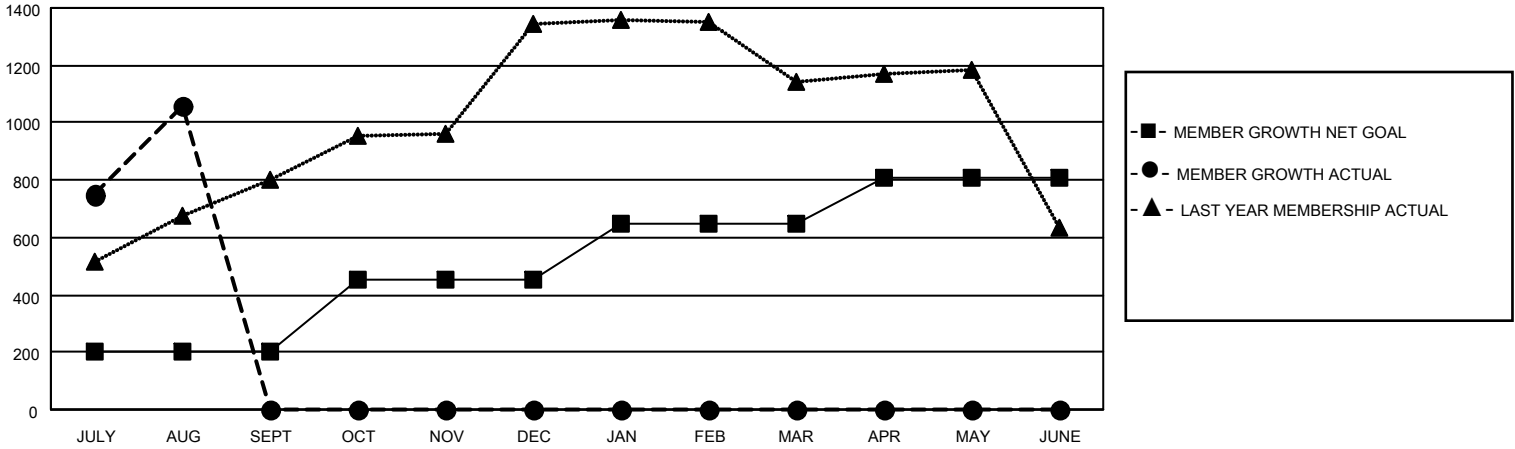
Clubs			
RESULTS FOR 2021-2022			
QUARTER	NEW CLUB GOAL	NEW CLUBS	DROPPED CLUBS
JULY/AUG/SEPT	21	40	4
OCT/NOV/DEC	12	0	0
JAN/FEB/MAR	12	0	0
APR/MAY/JUNE	6	0	0

Members			
RESULTS FOR 2021-2022			
QUARTER	MEMBER GROWTH NET GOAL	MEMBER GROWTH ACTUAL	DROPPED MEMBERS ACTUAL (including transfers)
JULY/AUG/SEPT	200	1229	156
OCT/NOV/DEC	250	0	0
JAN/FEB/MAR	200	0	0
APR/MAY/JUNE	155	0	0

GOALS AND ACTUAL NEW CLUBS CUMULATIVE



GOALS AND ACTUAL MEMBERS CUMULATIVE



DROPPED CLUBS: 4

125 CLUBS OF 347 ADDED 1 OR MORE NEW MEMBERS

GENDER DISTRIBUTION

MALE	5,497 (69.85%)
FEMALE	2,373 (30.15%)
NON BINARY	0 (0.00%)
PREFER NOT TO ANSWER	0 (0.00%)

DROPPED MEMBERS

[CLICK HERE FOR CUMULATIVE MEMBERSHIP DATA](#)

DECEASED	2
CLUB CANCELLED	67
OTHER	87
TOTAL	156

TOTAL FAMILY UNIT MEMBERS 5,919

FAMILY MEMBERS PAYING HALF DUES 4,082